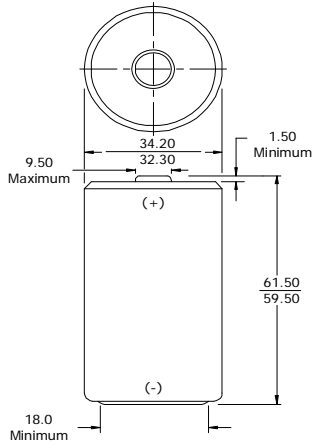


ENERGIZER NH50-2500



Industry Standard Dimensions

(millimeters)



Specifications

Classification: Rechargeable
Chemical System: Nickel-Metal Hydride (NiMH)
Designation: IEC-HR20
Nominal Voltage: 1.2 Volts
Rated Capacity: 2500 mAh (to 1.0 volts)
 Based on 500 mA (0.2C) discharge rate
Typical Weight: 73.0 grams
Typical Volume: 56.5 cubic centimeters
Jacket: Plastic Label

Internal Resistance:

The internal resistance of the cell varies with state of charge, as follows:

Cell Charged	Cell 1/2 Discharged
11 milliohms	21 milliohms
(tolerance of ±20% applies to above values)	

AC Impedance (No Load):

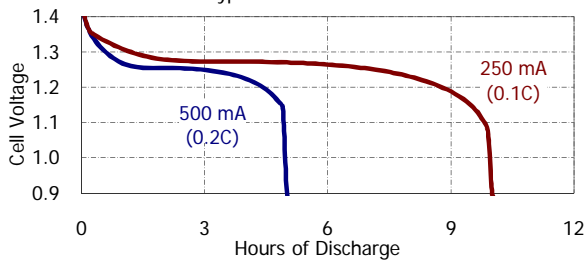
The impedance of the charged cell varies with frequency, as follows:

Frequency (Hz)	Impedance (milliohms) (Charged Cell)
1000	9

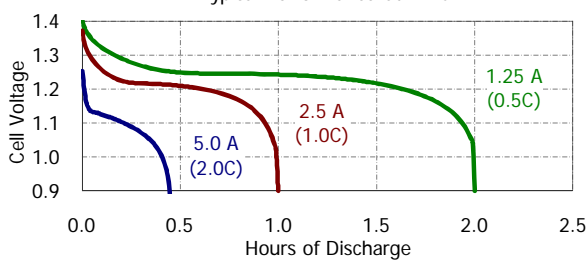
Above values based on AC current set at 1.0 ampere.
Value tolerances are ±20%.

Typical Discharge Characteristics

Typical Performance at 21°C



Typical Performance at 21°C



Important Notice

This datasheet contains typical information specific to products manufactured at the time of its publication.
©Energizer Holdings, Inc. - Contents herein do not constitute a warranty.