

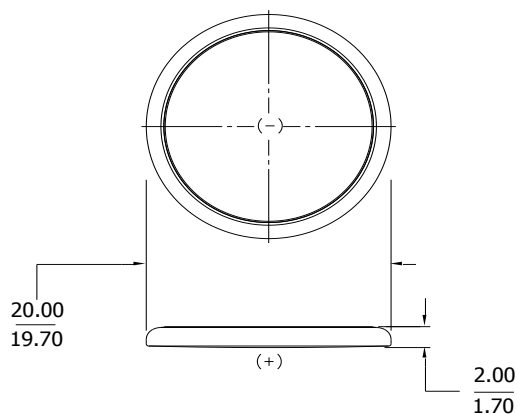
# ENERGIZER NO. BR2020

**LITHIUM COIN**



## Industry Standard Dimensions

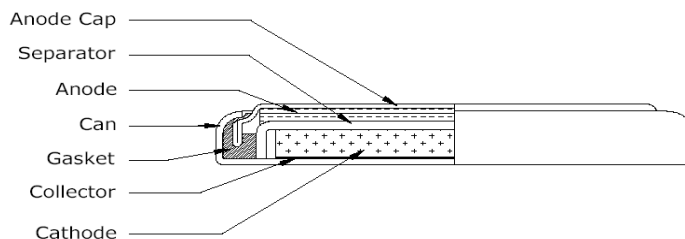
(mm)



## Specifications

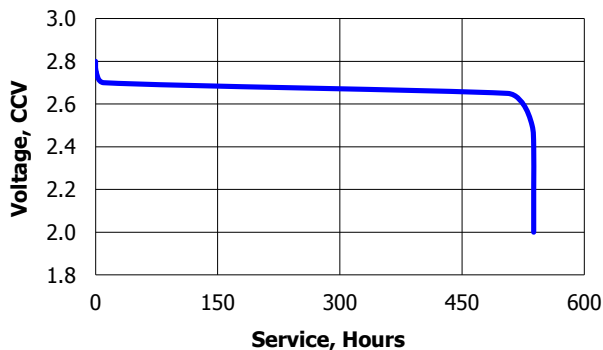
<b>Classification:</b>	"Lithium Coin"
<b>Chemical System:</b>	Lithium / Poly-Carbon Monofluoride (Li/CFx)
<b>Designation:</b>	IEC-BR2020
<b>Nominal Voltage:</b>	3.0 Volts
<b>Typical Capacity:</b>	100 mAh (to 2.0 volts) (Rated at 15K ohms at 21°C)
<b>Typical Weight:</b>	2.0 grams
<b>Typical Volume:</b>	0.6 cubic centimeters
<b>Max Rev Charge:</b>	1 microampere
<b>Energy Density:</b>	135 milliwatt hr/g, 483 milliwatt hr/cc

## Cross Section



## Typical Discharge Characteristics

**Load:** 15K ohms - Continuous  
**Typical Drain @ 2.7V:** 0.186 mA



## Simulated Application test

Typical Performance at 21°C (70°F)

Schedule:	Typical Drains: at 2.7V (mA)	Load (ohms)	Cutoff 2.0V (hours)
Continuous	0.186	15,000	538

### Important Notice

This datasheet contains typical information specific to products manufactured at the time of its publication.  
©Energizer Holdings, Inc. - Contents herein do not constitute a warranty.