



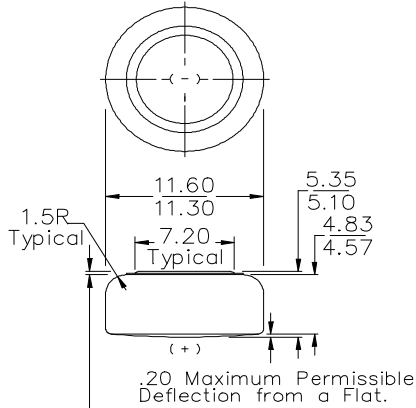
Eveready Battery Company, Inc.

Checkerboard Square
 St. Louis, MO 63164
 Telephone 1-800-383-7323
 Internet: www.energizer.com

Engineering Data

ENERGIZER NO. S76E

Dimensions (mm)



.13 Minimum (Applies to Top Edge of Gasket or Edge of Crimp, Whichever is Higher.)

Millimeters	Inches
0.13	0.005
0.20	0.008
1.50	0.059
4.57	0.180
4.83	0.190
5.10	0.201
5.35	0.211
7.20	0.283
11.30	0.445
11.60	0.457

Chemical System: Silver Oxide (Zn/Ag₂O)

Designation: ANSI / NEDA-1184SO, IEC-SR44

Battery Voltage: 1.55 Volts

Average Weight: 2.27 grams (0.08 oz.)

Volume: 0.57 cubic centimeters (0.035 cubic inch)

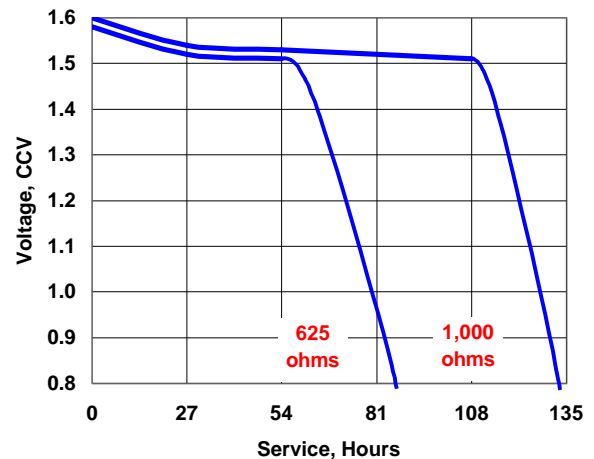
Average Service capacity (to 1.3 Volt): 195 mAh
 (Rated Capacity at 625 ohms, 16 hrs /day at 21°C)

Simulated Application Tests Estimated Average Service at 21°C (70°F)

Schedule	Typical Drains @ 1.55V		Cutoff Voltage
	(milliamperes)	Load (ohms)	0.9V hours
16 hours / day	1.55	1,000	134
16 hours / day	2.48	625	84

Internal Resistance The typical impedance of these cells on open circuit and during useful discharge varies from 7-12 ohms. This applies over a frequency range of 40 - 5,000 hertz and at the current drains shown.

Typical Discharge Characteristics Simulated Test at 21°C (70°F)



Important Notice

This data sheet contains information specific to batteries manufactured at time of its publication. Please contact your Energizer representative for most current information. Contents herein do not constitute a warranty.